



Welcome Michael Ferraina

JEVS Care at Home is excited to announce the arrival of our new CEO, Michael Ferraina! Michael comes to us with a long history of leadership experience in the Home Health Care sector, most recently as a Division Director at Bayada Home Health Care. Michael's skills range from leadership and strategic business planning to business development, sales and marketing. We are looking forward to Michael taking JEVS Care at Home to the next level of providing exceptional services, brand awareness, growth, expansion and partnership development. Michael's professional history also includes the roles of Vice President at Delaware Association for Home and Community Care, Account Executive at COPD Services, Inc. and General Manager/Administrator at Maxim Healthcare Services. Michael received his undergraduate degree in Business Management, Marketing and Leadership from Eckerd College and his MBA in Healthcare Administration from Wilmington University. Please join us in welcoming Michael to the JEVS Care at Home family!

Community Health Choices, Only 1 Month Away!

With only one month to go until the new Community Health Choices program rolls out in Southeastern PA, it is **CRITICAL** that anyone receiving services through one of the PA Medicaid Waivers (Aging, Attendant Care, Independence, OBRA) enroll with 1 of the 3 Managed Care Organizations as soon as possible! **It is important to understand that your Medicare benefits will not change and the Act 150 program is NOT included in this transition.**

The 3 companies to choose from are:



Keystone First



**pa health
& wellness.**

UPMC Community HealthChoices

Medicaid participants residing in Philadelphia, Bucks, Chester, Delaware and Montgomery counties should have already received letters and packets from the state announcing this monumental change in Pennsylvania's healthcare delivery system. If you have not yet received your packet, you should call Maximus, the state's Independent Enrollment Broker at: 1-844-824-3655 (TTY: 1-833-254-0690) or go online to: www.enrollchc.com.

You should select the managed care company that best meets your needs. Comparisons of all 3 plans and other valuable information can be found at <http://www.healthchoices.pa.gov> (click on Community HealthChoices).

If you need assistance in filling out the forms or, if you have any questions related to this transition, please call your JEVS Care at Home Client Coordinator OR our main number at 267-298-1325. We are here to help! Please reach out to us if you have any questions or need assistance with this transition!

Contact Us Anytime

Phone: 267-298-1325
Toll-Free: 866-964-4617

After Hours: 215-528-9669
Email: info@jevsathome.org

New Name, New Tagline, New Logo



Nearly 6 years after we opened our doors, JEVS at Home is excited to announce that we have enhanced our brand message by changing our name, tagline and logo. We are now **JEVS Care at Home; Preserving Independence with Exceptional Care!** Our new name, tagline and logo reflect our ongoing commitment to provide the highest quality in homecare that

maximizes independence plus a future of endless possibilities for you and your loved ones. You can expect the same great service that you've come to rely on from our exceptional caregivers and office staff.

"It was imperative that we incorporate the word "Care" into our name without losing our Jevs at Home brand", said Chief Strategy Officer Maryann Ludwig. "Now people will be able to better identify what we actually do. We also wanted to open up our logo as the roof seemed somewhat confining. I think we've accomplished what we set out to do with both of these important revisions."

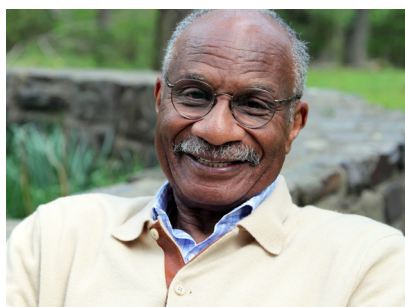
Look for our new marketing initiatives on TV, radio, online and on the road!

Giving Back



Join JEVS Care at Home in giving back to our communities by collecting non-perishable food items to be donated to Philabundance. Drop off your donations to our office located at 9350 Ashton Rd., Suite 102 in Philadelphia by December 14th to ensure that no one goes hungry this holiday season!

Public Transportation: Getting Around Philadelphia by Mr. Burwell



is understanding "how" to navigate the Southeastern Pennsylvania Transportation Authority (SEPTA).

Central to travel by SEPTA are various stations and terminals that discharge different types of vehicles. Included are regional rail, subway/elevated trains, trolleys, electric trolley buses, and motor buses. Vehicles are identified by an alphabet letter(s) or assigned numerically. When getting around Philadelphia, the traveler should be aware that streets running EAST and WEST are named after trees, former Pennsylvania Governors and other people of local and national significance. Streets that run NORTH and SOUTH are given numerical names. The city is divided into 12 broad geographical areas that can help you navigate to

Have you ever found yourself in a tizzy when traveling in and around Philadelphia? Traveling can give you a wealth of sightseeing experiences and a body of knowledge and using public transportation is the best way to see our city. The secret

your destination: Center City, South Philadelphia, Southwest Philadelphia, West Philadelphia, Lower North Philadelphia, Upper North Philadelphia, Bridesburg-Kensington-Richmond, Roxborough-Manayunk, Germantown-Chestnut Hill, Olney-Oak Lane, Near Northeast Philadelphia and Far Northeast Philadelphia.

Once you know the section of the city where your destination is located, you must determine what transportation to take and where to get on and get off. You must also know if you need to transfer to a second or third transport to reach your destination. SEPTA also operates CCT Connect that provides door-to-door service for those age 65+ or persons with disabilities. You and your doctor must complete the paperwork to enroll in this program. For information on how to enroll in CCT Connect call **215-580-7145**.

Septa Key Card is the new method used to pay the fare required to ride SEPTA. Tokens and transfer passes are no longer used, cash can be used but change is not available. Key Cards can be purchased at SEPTA Transit sales offices, Fair Kiosks machines and selected retail locations. Schedules are available on most transit vehicles and SEPTA locations. For additional information you may call SEPTA Customer Service at 215-580-7800 or go to the website **www.septa.org**.

Nurse Kim Health & Wellness Holiday Crafting for the Whole Family



As winter comes, temperatures drop and most people spend more time indoors to keep warm. But with cold and possibly snow, also comes the holidays! Family gatherings are a big part of our holiday celebrations, but sometimes elderly family members, limited by mobility, feel left out or withdrawn. Finding ways to engage all family members helps create lasting memories. One way to include all family members in the celebration process is by making simple crafts at home to brighten the holidays.

Here are few simple, easy, home craft projects that can engage family members of all ages. Be sure to take plenty of pictures that can be enjoyed long after the holiday season has passed:

Recycled Card Bookmarks - Use ribbon, glue, and old Christmas cards to make simple bookmarks.

Mason Jar Snow Globes - Encourage seniors to put knick-knacks collected over the years in mason jars. Fill the jar with distilled water to just below the lid. Add about 1 tablespoon of liquid glycerin (found in hobby stores) to thicken the water. Secure the lid for an instant snow globe filled with precious memories!

Memento Ornaments - Clear, hollow ornaments can be found in hobby stores and most discount stores in the craft section. They are easy to paint or fill with special mementos. These are often valued as priceless memory holders and conversation pieces for the entire family to cherish.

Scrapbooks/Photo Albums - Good old-fashioned scrapbooking allows seniors to reminisce and share stories with a sense of purpose and delight.

Needlework/Sewing Projects - There are a ton of easy, fast crafts that seniors and people of all ages can make using fabric, needle, and thread (or yarn). Search online for kits, sewing ideas and "Do it Yourself" directions.

Training with Nurse Kim



CPR, AED, First Aid Training

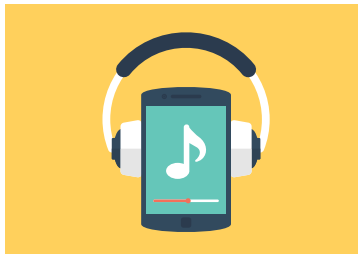
December 4th 1:00pm – 5:00pm

January 8th 1:00pm – 5:00pm

9350 Ashton Road, Suite 102
Philadelphia, PA 19114

To RSVP, call (267)298-1681

IPODS NEEDED!!



JEVS Care at Home is accepting donations of gently used IPODS for our Music & Memory program. Please contact 267-298-1325 for information.

Energy & Heat Assistance with LIHEAP



Are you in need of energy assistance? The Low-Income Home Energy Assistance Program, also known as LIHEAP, helps low-income families pay their heating bills. This grant offers assistance in the form of a cash grant, sent directly to the utility company, or a crisis grant for households in immediate danger of being without heat during cold months. This program is now taking applications. For more information and to apply, contact the LIHEAP hotline at 1-866-857-7095 or visit online at <http://bit.ly/paliheap>.

Secure benefits through the Benefits Data Trust (BDT)



The Benefits Data Trust increases access to various benefits programs that help low-income individuals afford food, shelter and medical expenses. Through its innovative strategies, technology and cross-sector partnerships, BDT provides comprehensive application assistance to eligible individuals in accessing services in meeting their basic needs. For more information on its programs and services or for locations of BDT Benefit Centers call 215-207-9100 or visit them online at <https://bdtrust.org>.

Follow us on Social Media



Facebook.com/JEVSatHome



Twitter.com/JEVSatHome



Instagram: jevsathome



LinkedIn.com/company/jevs-at-home



9350 Ashton Rd., Suite 102
Philadelphia, PA 19114

19020-3973

Non Profit Org
US Postage
PAID
Philadelphia, PA
Permit # 5634

For more information about our services,
please call 267-298-1325 or
www.jevsathome.org

JEVS Care at Home Complaint Hotline:
855-883-2424



The JEVS Care at Home family wishes everyone a safe and happy holiday season and a prosperous New Year!
We are truly grateful for our clients, caregivers, colleagues and community partners! So from our family to yours....HAPPY Holidays!

JEVS Care at Home Word Finder

COOKIES

FAMILY

FUN

GIFTS

HOLIDAY

SHIVER

SNOW

WINTER

	J	X	Q	M	M	
	R	E	V	I	H	S
	L	J	K	I	W	S
	R	D	K	U	U	V
	B	H	P	I	Z	T
	L	O	D	P	X	N
		Y	L	V	X	W
	A	O	V	I	I	R
	C	B	A	I	N	D
M	O	J	N	T	R	U
J	O	N	E	V	L	V
D	K	R	H	R	H	T
H	I	H	R	G	S	J
D	E	L	Y	L	I	M
S	Z	P	O	F	U	T

JEVS Care at Home does not discriminate on account of a person's age, race, color, religion, creed, sexual orientation, marital status, national origin, ancestry, citizenship, military status, veteran status, HIV status, handicap, disability, gender, gender identity or expression, or membership in any other protected group.